



Distributed by:

Thane Canada Inc.  
Mississauga ON L4W 5M6, Canada  
[www.thane.ca](http://www.thane.ca)

Thane USA, Inc.  
Canton OH 44718, U.S.A.  
[www.thane.com](http://www.thane.com)

Thane Direct UK Limited  
London EC1Y 8NA, UK  
[www.thane.tv](http://www.thane.tv)

Danoz Direct Pty Ltd.  
Mascot NSW 2020, Australia  
[www.danoz.com.au](http://www.danoz.com.au)

Operadora Ainoa, S.A.P.I. DE C.V.  
Avenida Magnocentro #5 Piso 1  
Huixquilucan Estado de México C.P. 52760  
[www.mejorcompratv.com](http://www.mejorcompratv.com)

TVNS Scandinavia AB  
SE-211 18 Malmö, Sweden  
[www.tvins.com](http://www.tvins.com)

© 2017 Thane IP Limited.  
MADE IN CHINA

X5 VAC PRO MNL ENG R1 170905

# X5VAC™ PRO



**User's Guide**  
VCT-3

## THANK YOU

Congratulations on your choice of the X5 VAC PRO vacuum cleaner. Ergonomically designed, this attractive and highly effective X5 VAC PRO cleaning appliance is the latest in home cleaning technology.

It is compact and always ready in an instant for quick pick-ups in and around the house.

Now you can keep your home spotlessly clean.

The economical X5 VAC PRO cleaning appliance is well accessorized.

Its innovative and effective tools take care of almost every mess on both hard surfaces and carpet.

The X5 VAC PRO cleaning appliance includes an easy-emptying bagless dust cup and washable / reusable filter.

Extension pipes and accessories allow for cleaning high, low and in hard to reach crevices.

Thane Direct and its affiliated companies assume no liability for personal injury or property damage resulting from the misuse of the X5 VAC PRO vacuum cleaner including the failure to comply with the instructions contained in this User's Guide or provided by the manufacturer or distributor of the treated surface.

**IMPORTANT SAFETY INFORMATION**  
**READ ALL INSTRUCTIONS BEFORE USING THIS CLEANING APPLIANCE**

## G. ADDITIONAL INFORMATION

### SPECIFICATIONS

Battery	Lithium-ion
Charge Time (Approximate)	Initially: 7 hours; Re-charging: 7 hours
Use Time	About 15 minutes
Product Weight (Excluding Accessories)	1.15 kg / 2.5 lbs
Input	100 - 240V

### BATTERY USAGE

- Charge battery every 3-6 months if not used to prolong battery life.

### BATTERY DISPOSAL

- Battery Pack must be disposed of or recycled in an environmentally friendly manner in accordance with any applicable laws.
- Remove the Battery Pack from the X5 VAC PRO before disposal.

## F. TROUBLE SHOOTING - WINDOW CLEANER

Problem	Possible Cause	Solution
Streaks when drying	<ul style="list-style-type: none"> <li>Wiper Blade damaged</li> </ul>	<ul style="list-style-type: none"> <li>Remove Wiper Blade and reverse.</li> </ul> <p>If both sides of the Wiper Blade are damaged, replace with a new Wiper Blade (available from the Customer Service where you purchased your unit from). To replace or reverse the Wiper Blade, gently pull the Wiper Blade sideways out of its slot. Reverse the Wiper Blade (or replace if damaged) before sliding back into its slot.</p>

## CONTENTS

<b>A. Important Safety Instructions</b> .....	<b>3 - 6</b>	<b>E. How to Use Optional Accessories</b> .....	<b>19 - 26</b>
<b>B. Key Features</b> .....	<b>7 - 8</b>	<b>Liquid Lifter</b> .....	<b>19</b>
<b>C. Optional Accessories</b> .....	<b>9</b>	Instructions for Use .....	19
<b>D. How to Use the X5 VAC PRO</b> .....	<b>10 - 18</b>	Using the Liquid Lifter with Suction Tool.....	20
<b>Instructions for Use</b> .....	<b>10</b>	Using the Liquid Lifter with Window Cleaner ...	21 - 22
Charging Battery Pack.....	10	Maintenance & Care.....	23
Disconnecting & Connecting Battery Pack .....	11	Using the Optional Accessories.....	24 - 25
Using the Standard Accessories .....	12	<b>Charging Dock</b> .....	<b>26</b>
Preparing for Use .....	13	<b>F. Trouble Shooting</b> .....	<b>27 - 29</b>
Using the X5 VAC PRO .....	13	<b>G. Additional Information</b> .....	<b>30</b>
<b>Disposing of Dirt and Debris</b> .....	<b>15</b>	<b>1. Specifications</b> .....	<b>30</b>
Emptying the Dust Cup .....	15	<b>2. Battery Disposal</b> .....	<b>30</b>
Cleaning the Filters .....	16		
Cleaning Accessories.....	17		
Storage.....	17		
<b>Maintenance &amp; Care</b> .....	<b>18</b>		

## A. IMPORTANT SAFETY INSTRUCTIONS

When using an electric appliance, basic safety precautions should always be observed.

**BEFORE USING THE X5 VAC PRO, PLEASE READ ALL WARNINGS AND USE INSTRUCTIONS CAREFULLY.**

**⚠ WARNING** To reduce the risk of fire, electric shock, or injury, observe the following:

### When Using the X5 VAC PRO

- The X5 VAC PRO is a re-chargeable, stick vacuum cleaner designed for indoor household use. Do not use for any purpose other than described in this User's Guide.
- The X5 VAC PRO is to be used by adults and is designed for light, domestic indoor vacuuming and car use. Do not use it when driving or while the car is in motion.
- Use the X5 VAC PRO only with the attachments supplied.
- Before using the X5 VAC PRO, ensure that it is fully assembled with the dust cup and filters, or Liquid Lifter attachment in place.
- Do not use the X5 VAC PRO if it has been dropped, damaged, left outdoors or dropped in water; have it inspected or repaired at an Authorized Service Centre.
- Do not use outdoors or on wet surfaces or pick up water or other liquids (unless you are using the Liquid Lifter with the X5 VAC PRO)
- Do not use, store or charge the batteries of the X5 VAC PRO outdoors.
- When using or moving the X5 VAC PRO, hold by the handle. Do not lift by holding onto any of the accessories.
- The X5 VAC PRO creates suction. Do not expose your hair, loose clothing, fingers or body parts to openings or moving parts.
- Do not use the X5 VAC PRO to pick up:
  - o Hot, burning or smoking objects such as cigarettes, matches or hot ashes
  - o Hard or sharp objects such as glass, or metal objects, such as pins, nails and paper clips
  - o Large objects which can block airflow
  - o Liquids (unless you are using the Liquid Lifter)
  - o Poisonous, corrosive or toxic materials (such as chlorine bleach, ammonia and drain cleaner)
  - o Flammable or combustible materials or liquids (lighter fluid, gasoline, etc.) or use in the presence of explosive liquids or vapor

## F. TROUBLE SHOOTING - LIQUID LIFTER

Problem	Possible Cause	Solution
No lifting or poor lifting of liquids	<ul style="list-style-type: none"> <li>• Storage Tank is full</li> </ul>	<ul style="list-style-type: none"> <li>• Empty Storage Tank.</li> </ul>
Liquid escapes from the Storage Tank	<ul style="list-style-type: none"> <li>• Storage Tank is full</li> <li>• Liquid Lifter is being tilted upside down</li> <li>• Release Pin is jammed</li> </ul>	<ul style="list-style-type: none"> <li>• Disconnect Liquid Lifter from Main Body and empty Storage Tank.</li> <li>• Disconnect Liquid Lifter from Main Body and empty Storage Tank. Resume cleaning keeping the Liquid Lifter in position A or B (see page 19).</li> <li>• Disconnect Liquid Lifter from Main Body and thoroughly rinse out entire Liquid Lifter, removing all dirt and debris that may be stuck inside the unit.</li> </ul>

## F. TROUBLE SHOOTING - MAIN UNIT

**⚠️ WARNING** Switch OFF the X5 VAC PRO and disconnect the Battery Charger (if connected) before checking for problems and possible solutions. Failure to do so could result in personal injury. Beware of sharp objects when checking for problems and possible causes.

Problem	Possible Cause	Solution
Motor does not turn on	<ul style="list-style-type: none"> <li>Battery is flat</li> <li>Battery Pack is not fitted</li> <li>Power Switch is OFF</li> </ul>	<ul style="list-style-type: none"> <li>Charge Battery Pack or replace with fully charged spare Battery Pack(if available).</li> <li>Connect battery pack.</li> <li>Turn Power Switch ON.</li> </ul>
Motor turns OFF while in use	<ul style="list-style-type: none"> <li>Battery is flat</li> </ul>	<ul style="list-style-type: none"> <li>Charge Battery Pack or replace with fully charged spare Battery Pack (if available).</li> </ul>
Does not pick up dirt	<p>Weak suction force caused by:</p> <ul style="list-style-type: none"> <li>Full Dust Cup</li> <li>Clogged Outer Filter</li> <li>Clogged Inner Filter</li> <li>Flat Battery</li> <li>Air Inlet (of the attached accessory) is clogged or blocked</li> <li>Triangular Swivel Vacuum Head is clogged or blocked</li> </ul>	<ul style="list-style-type: none"> <li>Empty Dust Cup.</li> <li>Clean Outer Filter.</li> <li>Clean, wash &amp; dry Inner Filter.</li> <li>Charge Battery or replace with fully charged spare Battery (if available).</li> <li>Remove accumulated dust &amp; dirt from Air Inlet.</li> <li>Disconnect Triangular Swivel Vacuum Head from Dust Cup Nozzle or Extension Pipe(s), turn over and remove debris or obstruction.</li> </ul>
Dirt and debris drops out of Dust Cup	<ul style="list-style-type: none"> <li>Flap door is jammed and remains open</li> <li>Flap Door is damaged and does not seal properly</li> <li>Flap section in Flap Door is dislodged</li> </ul>	<ul style="list-style-type: none"> <li>Disconnect Dust Cup Nozzle from Dust Cup, remove Flap Door. Clear any blockage from Flap Door.</li> <li>Proceed as above and replace Flap Door.</li> <li>Proceed as above and re-fit the Flap section.</li> </ul>

Table 3. Trouble Shooting

## A. IMPORTANT SAFETY INSTRUCTIONS (continued)

- Do not obstruct the air flow openings or Air Vents of the X5 VAC PRO or place it on a soft surface, such as a bed or couch, where the air openings or Air Vents may be blocked.
- Keep air openings free of lint, hair, debris or anything that may obstruct air flow. Do not use the X5 VAC PRO or any of the attachments with any opening blocked.
- Do not handle the X5 VAC PRO, charger, terminals or battery pack with wet hands.
- Do not place the X5 VAC PRO on or near a hot gas or electric burner.
- Do not use the X5 VAC PRO in an enclosed space filled with vapors given off by, for example, oil-based paint, paint thinner or other explosive or toxic vapors.
- Use extra caution when vacuuming on stairs.
- Keep working area well lit.
- Vacuum fine dirt such as flour or plaster dust only in very small amounts to avoid clogging the unit.
- Before vacuuming highly polished floors, such as sealed hardwood or linoleum, make sure that the underside of the Vacuum Head is free from foreign objects that could cause marking.
- Before using the X5 VAC PRO or its accessories on flooring, rugs and carpet, consult the flooring manufacturer's recommended instructions.

### Inspection and Repairs

- Before use, always check for any damage to the Main Unit, the Accessories and the Battery Charger.
- Do not lubricate any parts, or carry out any maintenance or repair work on the X5 VAC PRO or its accessories other than as shown in this User's Guide.

### After Use and Storing

- It is recommended to empty the Dust Cup and to clean the Mesh Filter and Fabric Filter after each use.
- Store your X5 VAC PRO and accessories indoors in a dry place and away from children.
- When storing after use, ensure the Battery Charger is disconnected from the Battery Pack and unplug from the electrical outlet.

## A. IMPORTANT SAFETY INSTRUCTIONS (continued)

### Battery Charger

- The Battery Charger has been designed for a specific voltage. Before charging the Batteries, always check that the voltage of the electrical outlet corresponds to the voltage on the rating plate of the Charger Unit as follows: Input: 100 - 240V ~ 50/60Hz.
- Use only the Battery Charger supplied for charging batteries.
- Connect the plug on the Charger Unit to a standard, properly grounded electrical outlet.
- Do not modify the plug on the Charger Unit. Do not force the plug into an electrical outlet.
- Do not use an extension cord. Plug the Charger Unit directly into an electrical outlet.
- Always turn the power OFF before connecting the Battery Charger.
- Do not charge the batteries outdoors.
- Do not modify the Battery Charger or replace with any other type of Battery Charger.
- Do not damage the Charger Cord. Never pull or carry the Charger Unit by the cord, use cord as a handle, close door on cord, or pull cord around sharp edges or corners. Do not run appliance over cord. Keep the cord away from heated surfaces.
- Do not unplug the Charger Unit by pulling the Charger Cord. To unplug the Charger Cord, grasp the Charger Unit and gently pull.
- Regularly check the Charger Cord for any damage. Do not use if damaged. To avoid a hazard, have damaged or worn Charger Cord replaced by the manufacturer or a qualified repair facility.
- Do not open or probe the Battery Charger.

## E. HOW TO USE OPTIONAL ACCESSORIES (continued)

### X5 VAC PRO Charging Dock Installation Instructions

#### INSTALLING THE POWER CABLE

1. Thread the Battery Charger (included with your X5 VAC PRO) Cable Jack from underneath the Charging Dock through opening (1) leaving enough Cable (at least an inch) from the bottom of the Charging Dock to ensure that it can be gripped and connected to the Battery Pack.
2. If the full length of cable is not needed to connect to the power source, wrap any excess cable around the cable hooks (2).
3. Slide the cable through the V-grooves (3) and then through one of the Corner Grooves (4) to secure the cable.

#### WALL MOUNTING

The Charging Dock can be used as a stand-alone unit or it can be wall mounted.

To mount the Charging Dock to the wall:

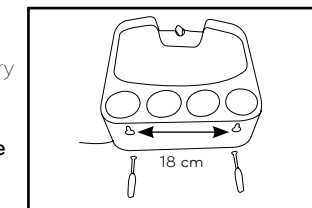
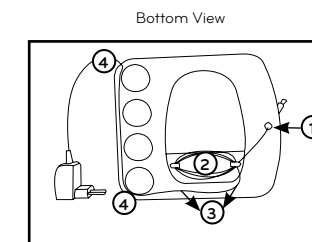
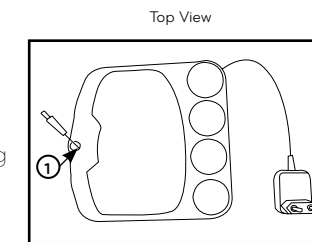
1. Drill 2 holes into the wall, horizontal to each other and 18 cm apart.
2. Screw in the screws (not provided) and allow them to protrude slightly from the wall.
3. Mount the charging dock to the wall by sliding the connection holes over the protruding screws.

#### USING THE CHARGING DOCK

1. Place the X5 VAC PRO into the Charging Dock and connect the Battery Charger Cable Jack to the Battery Pack.

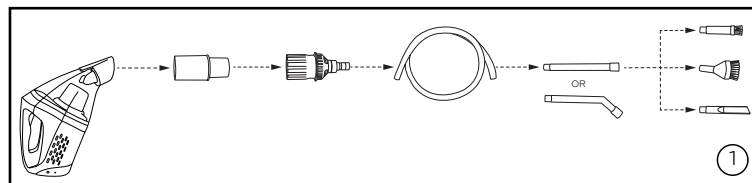
**IMPORTANT** After charging and before removing the X5 VAC PRO from the Charging Dock, **first unplug the Cable Jack from the Battery Pack.**

2. Various accessories can be stored in the Charging Dock by inserting them into the 4 holes provided.



## E. HOW TO USE OPTIONAL ACCESSORIES (continued)

Accessory	Intended Use	Instructions for Use
Super Slim Flexible Long Nozzle	Reaches way under refrigerators, behind radiators and for vacuuming lint out of your dryer and under your washer.	Connect to the Flexible Hose for cleaning hard to reach area.
2-in-1 Bristle Brush	Can be used as a brush with bristles or as a standard suction tool without bristles.	Connect directly to one of the Extension Pipes. Slide the bristles of the 2-in-1 Brush sideways to attach or detach from the suction head.
Accessory Bag	Store all your X5 VAC PRO accessories.	Easy to locate needed tool or accessory and reach for it.
Detailing Kit	Cleans the tiniest of spaces, such as a computer keyboard or the dashboard in your car.	Insert the Connector directly to the Dust Cup (ensuring a firm, snug fit) and then attach the Adaptor to the Connector. Insert the Clear Hose to the Adaptor with one of the extension tubes and cleaning tools (see 1).



## A. IMPORTANT SAFETY INSTRUCTIONS (continued)

### Battery Pack

- To charge the Battery Pack, only use the Battery Charger supplied with the X5 VAC PRO.
- Do not press the Battery Release Button during cleaning operation.
- Keep the terminal on the Battery Pack clear of objects. Do not probe or insert any objects other than the Charger Cord into the Charger Port.
- The Battery Pack is a sealed unit - do not attempt to open.
- Do not store the Battery Pack in locations where the temperature may exceed 40°C/104°F. Charge Battery Pack only at ambient temperatures between 4°C/39.2°F and 40°C/104°F.
- Do not mutilate or incinerate the Battery Pack, or dispose of the Battery Pack in a fire or trash compactor as Battery Pack will explode at high temperatures!
- Do not allow the Battery Pack to be immersed in water or become wet.
- Do not throw or cause impact.
- Under normal circumstances, the Battery Pack poses no safety concerns. In the unlikely event that liquid leaks from the battery, do not touch the liquid and observe the following precautions:
  - Skin contact - can cause irritation. Wash with soap and water.
  - Inhalation - can cause respiratory irritation. Provide fresh air and seek medical advice.
  - Eye contact - can cause irritation. Immediately flush eyes thoroughly with water for at least 15 minutes. Seek medical attention.
- Disposal - wear gloves to handle the Battery Pack and dispose of immediately in accordance with local ordinances or regulations.
- Charge battery every 3-6 months if not used to prolong battery life.

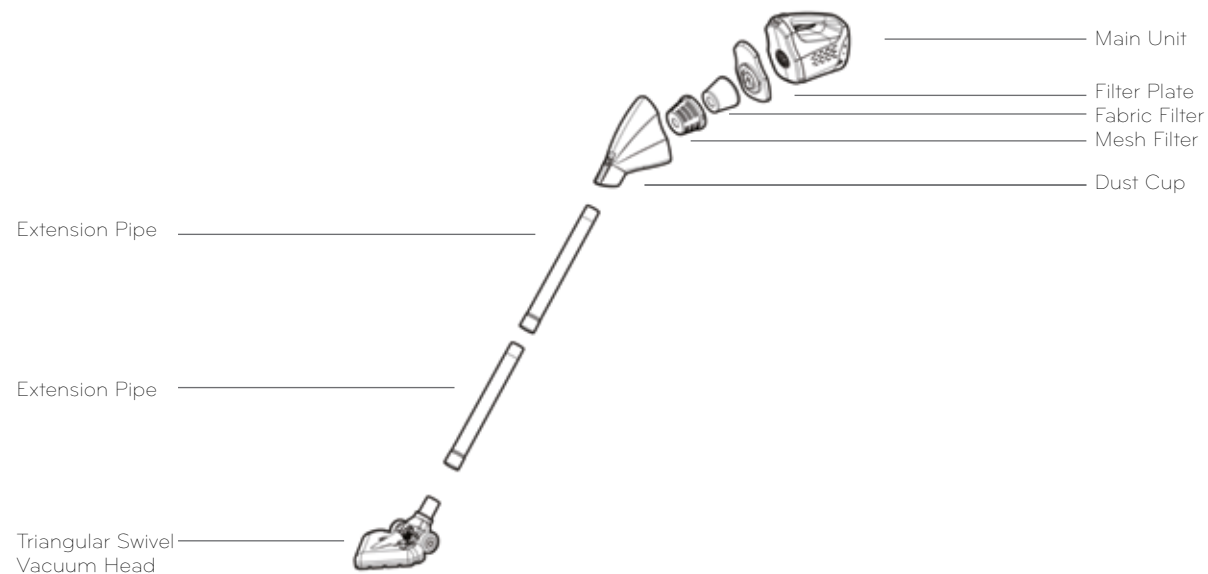
### Safety of Others

- The X5 VAC PRO is not intended for use by children and persons with reduced physical, sensory or mental capabilities, or lack of experience and knowledge, unless they have been given supervision or instructions concerning the use of the X5 VAC PRO by a person responsible for their safety.
- Do not allow the X5 VAC PRO to be used as a toy. Close attention is necessary when used by or near children.

# SAVE THESE INSTRUCTIONS

## B. KEY FEATURES

### STANDARD ASSEMBLY



## E. HOW TO USE OPTIONAL ACCESSORIES (continued)

Accessory	Intended Use	Instructions for Use
Flexible Hose	Allows for flexibility when cleaning hard to reach areas.	Typically, it connects to the Brush Tool or Crevice Tool and is handy for cleaning the interior of cars.
Crevice Tool	Use in tight and narrow spaces, corners and along edges in areas such as dresser drawers, upholstered furniture, stairs and baseboards.	Can be used when connected to either one or both Extension Pipes, Flexible Hose or directly to the Dust Cup Nozzle for close-up vacuuming.
Round Brush	Use for vacuuming shelves, curtains, lamps and furniture. The head of the brush can be swiveled to obtain the best angle for cleaning.	Typically, it connects to one or both Extension Pipes, Flexible Hose or directly to the Dust Cup for close-up vacuuming.
Dome Duster	For general dusting as well as for dusting of delicate and fragile objects.	Attach the Dome Duster to the Flexible Hose or to an Extension Pipe. Use the brush to dust the cleaning surface.
3-in-1 Brush	Three interchangeable inserts to be used as follows: <b>Lint Brush:</b> Use for picking up fluff or hair on upholstery, carpets or clothing <b>Floor Brush:</b> Use on hard surfaces such as wooden floors, tiles or marble to remove dust and dirt <b>Carpet Brush:</b> Use on carpets to remove dust and dirt	Select an insert (Lint Brush, Floor Brush or Carpet Brush) for the task at hand and connect the insert to the 3-in-1 Brush. Then, connect the 3-in-1 Brush to the Extension Pipe, the Flexible Hose or to the Dust Cup Nozzle.



## E. HOW TO USE OPTIONAL ACCESSORIES (continued)

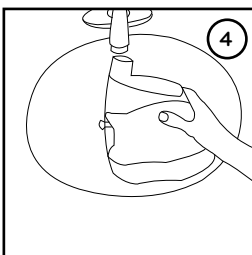
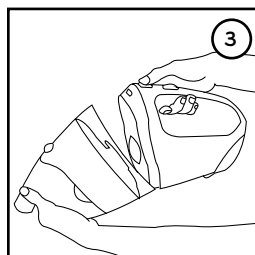
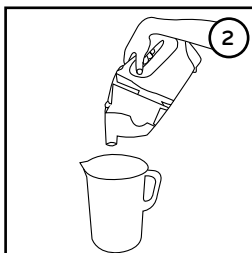
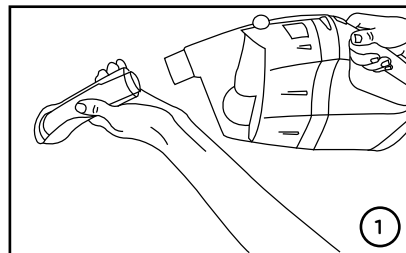


### MAINTENANCE & CARE

On completion of the cleaning task:

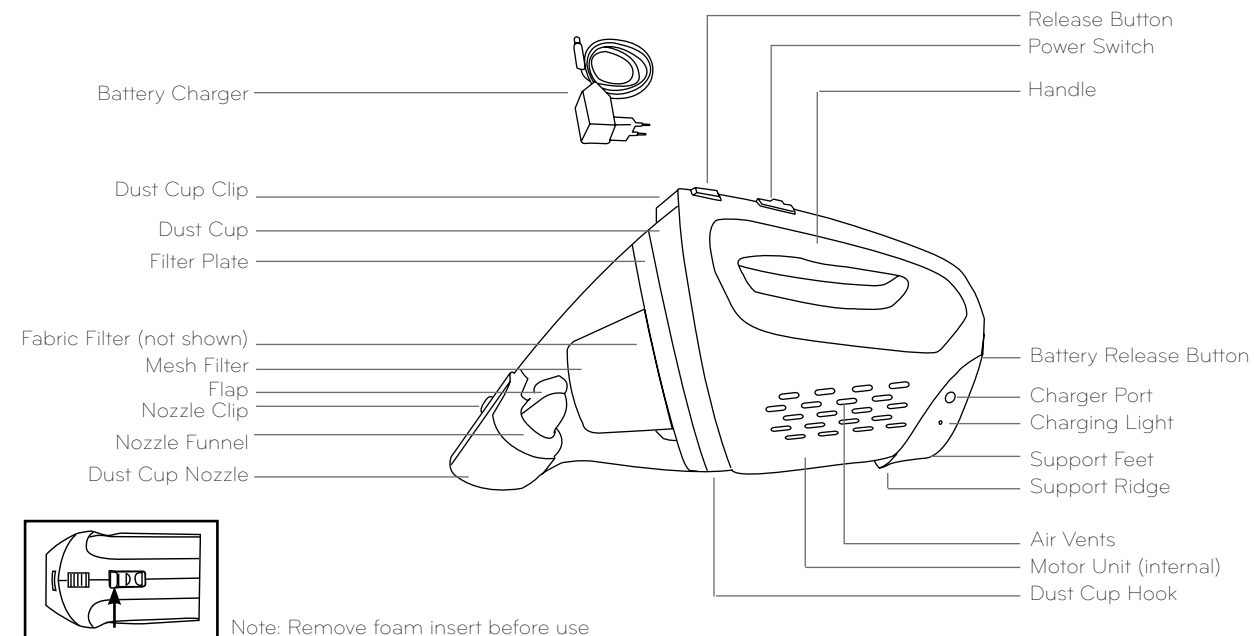
- Slide the Power Switch OFF.
- Remove the Suction Tool or the Window Cleaner from the Liquid Lifter (see 1) to dispose of dirt and debris.
- Carry the Liquid Lifter to a sink or drain.
- Drain the liquid from the Storage Tank by tilting the Storage Tank downwards (see 2).
- Disconnect the Liquid Lifter from the Main Body by pressing the Release Button (see 3).
- Thoroughly rinse both the Liquid Lifter and Window Cleaner with clean water (see 4).
- If the Flexible Extension Hose was used, rinse with clean water to remove any dirt and debris that may be lodged in the hose.
- Clean the outer surface of the Liquid Lifter with a soft, damp cloth.
- Store the Liquid Lifter in a protected area, away from children, at room temperature.
- For the Window Cleaner to work effectively, it is important that the Wiper Blade is not damaged as this will cause streaking.
- When storing the Window Cleaner, ensure it is stored so that it will not cause deformation or damage to the Wiper Blade.
- Do not unscrew any assembled parts of the Liquid Lifter as this may cause leakage.

**NOTE** Always empty, rinse and clean the Storage Tank immediately after each use.



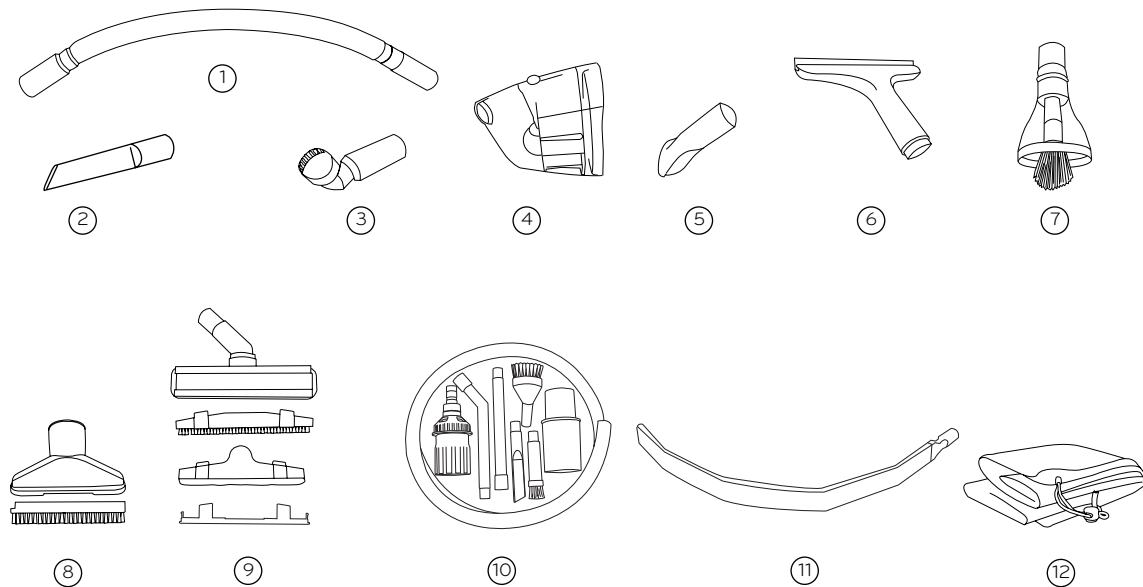
## B. KEY FEATURES (continued)

### MAIN UNIT



## C. OPTIONAL ACCESSORIES

1. Flexible Extension Hose
2. Crevice Tool
3. Round Brush
4. Liquid Lifter
5. Suction Tool for Liquid Lifter
6. Window Cleaner for Liquid Lifter
7. Dome Duster
8. 2-in-1 Bristle Brush
9. 3-in-1 Brush
10. Detailing Kit
11. Super Slim Flexible Long Nozzle
12. Accessory Bag

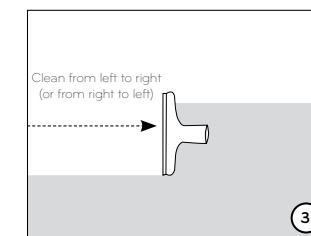
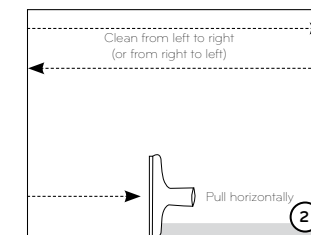
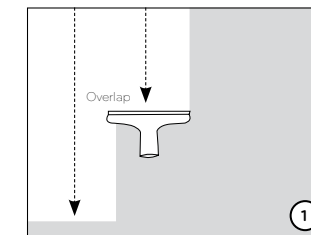


Note: Configuration received and availability of accessories may vary by regions. To order accessories, please contact customer service where you purchased your unit from or your local distributor.

## E. HOW TO USE OPTIONAL ACCESSORIES (continued)

### Using the Window Cleaner on vertical surfaces such as windows or mirrors

- Fill any suitable household container with clean water. Mix a few drops of liquid detergent with the water.
- Dip a soft cloth or sponge in the water and wash the surface to be cleaned to loosen any dirt.
- Switch the Main Unit ON.
- Place the Wiper Blade horizontally against the window.
- Starting from the top of the window, move the Window Cleaner downwards using smooth, even strokes, from one side of the window to the other (see 1).
- Each downward stroke should overlap slightly with the previous stroke.
- At the bottom of the window, turn the Window Cleaner so that the Wiper Blade is positioned vertically. Move horizontally across the bottom of the window to remove any remaining liquid (see 2).



Note: If the Window Cleaner is being used with the Flexible Extension Hose attached, windows can be dried by orientating the Window Cleaner vertically and drying windows starting at the top of the window pane and moving toward the bottom with a side-to-side motion (see 3).

Note: Should the amount of liquid being absorbed approach the MAX fill line as indicated on the Storage Tank, do not turn the Liquid Lifter on its side. First empty the Storage Tank and then proceed with drying of the surface.

## E. HOW TO USE OPTIONAL ACCESSORIES (continued)



### Using the Liquid Lifter with Window Cleaner

The primary use of the Window Cleaner is for cleaning and drying of non-porous surfaces such as windows and mirrors. In addition, the Window Cleaner can also be used for cleaning and drying of glass tops.

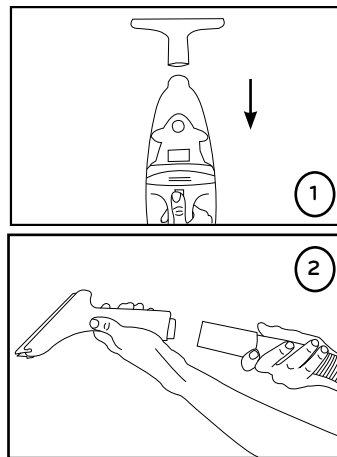
There are 2 alternative ways of connecting the Window Cleaner:

Option 1: Connect the Window Cleaner directly to the Liquid Lifter inlet pipe. Hold the Main Unit in both hands while using it. It is recommended to connect the Window Cleaner this way when cleaning horizontal surfaces such as glass or granite tops.

Note: Ensure that the Window Cleaner is correctly aligned to the Liquid Lifter (see 1).

Option 2: Connect the Flexible Hose to the inlet pipe of the Liquid Lifter and connect the Window Cleaner to the other end of the Flexible Hose (see 2).

Hold the Window Cleaner with one hand and the handle of the Main Unit with the other hand while using it.



## D. HOW TO USE THE X5 VAC PRO

### INSTRUCTIONS FOR USE

#### CHARGING BATTERY PACK

**⚠ WARNING** Before charging the Battery Pack, always check that the voltage of the electrical outlet corresponds to the voltage on the rating plate of the Battery Charger Unit.

- Your X5 VAC PRO contains 4 Lithium Ion Batteries sealed inside the Battery Pack.
- To charge the Battery Pack, use the Battery Charger supplied. The Battery Pack can be connected to the Main Unit (see 1). Alternatively, the Battery Pack may be disconnected from the Main Unit and charged separately (see 2).

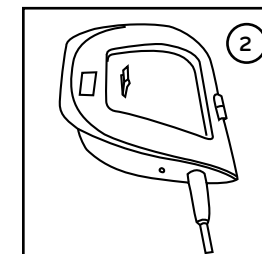
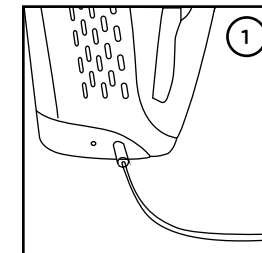
**Note:** If you have obtained a spare Battery Pack, this can be charged separately without being connected to the Main Unit.

- Before charging the Battery Pack attached to the Main Unit, ensure the Power Switch is OFF.
- **Initially, Battery Pack must be charged uninterrupted for 7 hours.** When fully charged, the X5 VAC PRO will operate for up to 15 minutes. Recharging the Battery Pack will take about 7 hours.
- To charge the Battery Pack, connect the Charger Unit to the electrical outlet and plug the Charger Cord into the Charger Socket located on the Battery Pack.
- The Charging Light on the Battery Pack will turn ON to indicate that the Battery Pack is charging. Once fully charged, the Charging Light will turn off.
- **Note:** While charging, the Battery Pack and the Charger Unit may become warm to the touch. This is normal and is no cause for concern.
- Once the Battery Pack is charged, unplug the Charger Unit from both the Charger Port of the X5 VAC PRO and from the electrical outlet.

**Tip:** To prolong battery life, completely discharge and recharge the Battery Pack every 1 - 2 months.

#### ⚠ CAUTION

Do not charge or store the Battery Pack at temperatures below 4° C/39.2°F & above 40° C/ 104°F. Do not place the Battery Pack in direct sunlight.



## D. HOW TO USE THE X5 VAC PRO (continued)

### DISCONNECTING & CONNECTING BATTERY PACK

The Battery Pack connected to the Main Body may need to be removed and replaced with another Battery Pack if obtained (available from the Customer Service where you purchased your unit from) for the following reasons:

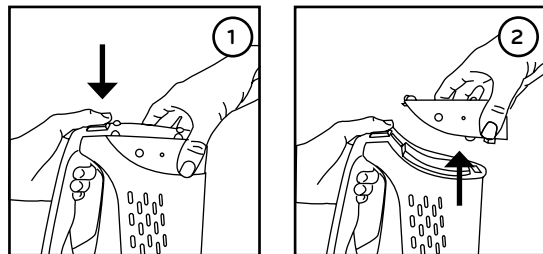
- During use the batteries may become run down. If you would like to continue cleaning, and have acquired a spare Battery Pack, you can swap Battery Packs.
- After prolonged use the Battery Pack may need replacement.

#### Disconnecting the Battery Pack

- With one hand, hold the Handle and press the Battery Release Button (see 1).
- With the other hand, grip the lower (curved part) of the Battery Pack and pull away from the Main Body in a straight line (see 2).

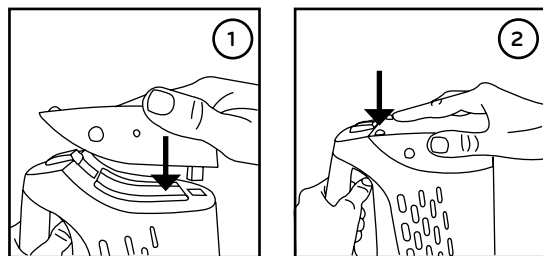
**⚠ WARNING** Do not rotate the Battery Pack when pulling it away from the Main Unit – pull out in a straight line.

The Battery Pack is clipped to the Main Unit and some force is required to separate it from the Main Unit.



#### Connecting the Battery Pack

- With one hand, hold the Handle. With the other hand, align the male terminal on the Battery Pack with the female terminal on the Main Unit (see 1).
- Push the terminals together in a straight line until the Battery Pack is positioned flush with the Main Body. Ensure that the Battery Release Button engages fully with the Battery Pack (see 2).



## E. HOW TO USE OPTIONAL ACCESSORIES (continued)

### Using the Liquid Lifter with Suction Tool

**⚠ WARNING** Before cleaning upholstery, check the manufacturer's tag on the furniture to see if it is safe to proceed.

- The Liquid Lifter is designed to lift liquids and clean soiled areas from carpets, upholstery and hard surfaces.
- Hold the Handle and slide the Power Switch ON. Move the Suction Tool over wet spills by pressing it down onto the cleaning surface and moving it gently back and forth over the area to be cleaned. Do not shake or use jerky movements. Continue until no more liquid can be removed (see 1).
- If the wet area is soiled: Apply a cleaning solution to the soiled area and use the brush on the Suction Tool to gently scrub and loosen the dirt before sucking up the dirt and liquid.
- If there is a dry area that is soiled: Lightly spray or dampen the area with a soft cloth, apply a cleaning solution to the soiled area, gently scrub the area with the brush to loosen the dirt, followed by sucking up the dirt and liquid using the Suction Tool.
- When the Storage Tank has reached its maximum capacity (Max Fill Line) (see 2), stop and slide the Power Switch OFF. Then empty the Storage Tank.

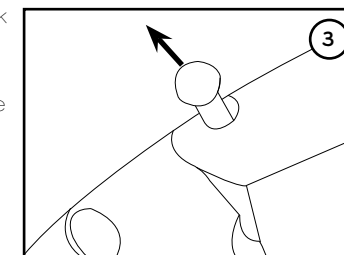
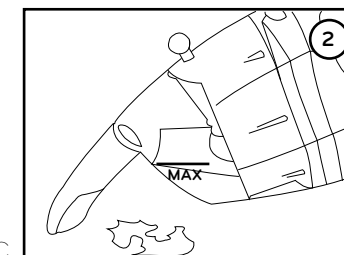
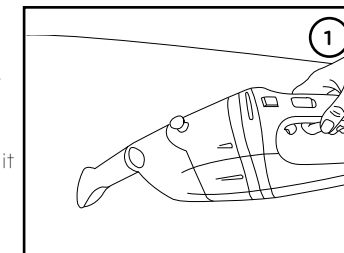
**Note:** Once the maximum capacity of the Storage Tank is reached, the Release Pin at the top of the Liquid Lifter will start rising and the suction force will diminish or stop (even though the X5 VAC PRO Motor is still running). This is a built in safety measure and an indication that the Storage Tank is full and must be emptied before continued use (see 3).

#### IMPORTANT

During the process of sucking up liquids, keep an eye on the level of liquid in the Storage Tank. Once the maximum fill line is reached, stop and empty the Storage Tank.

**Tip:** By taking immediate action after a spill, permanent staining can be prevented.

**Tip:** Ensure that the nozzle is angled at about 45 degrees to the cleaning surface to maximize suction strength.



## E. HOW TO USE OPTIONAL ACCESSORIES



### LIQUID LIFTER

#### INSTRUCTIONS FOR USE

- The Liquid Lifter is an attachment that connects to the Main Unit. It can be used with the Suction Tool to activate and clean soiled areas and to lift wet spills. Alternatively, it can be used with the Window Cleaner attachment to clean surfaces such as windows, mirrors and glass tops. Liquids and debris are deposited into the Storage Tank of the Liquid Lifter.

**⚠ WARNING** Do not use the Liquid Lifter while the X5 VAC PRO is charging. Ensure the X5 VAC is disconnected from the Charger before using the Liquid Lifter.

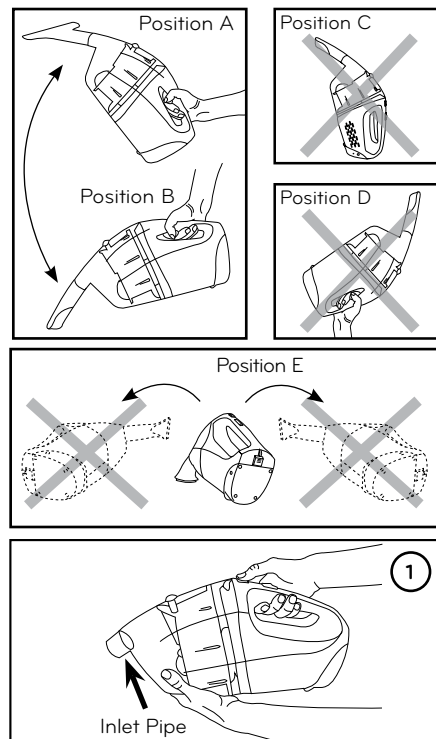
**⚠ WARNING** When using the Liquid Lifter, keep it anywhere between these two positions: position A, position B (depending on the cleaning surface). Once liquid has been absorbed into the Storage Tank, do not place the Liquid Lifter upright or tilt it backwards or lay it on its side (as shown as position C, D or E) as liquid may leak from the Storage Tank.

**⚠ WARNING** While using the Liquid Lifter, if any liquid leaks from the Motor Chamber or the Storage Tank, immediately stop, turn OFF the Power Switch and investigate the cause of the problem (see Trouble Shooting).

#### Preparing for Use

Connect the Liquid Lifter to the Main Body as follows:

- Disconnect the Dust Cup, including the Filter Plate with Mesh and Fabric Filters from the Main Unit.
- Connect the Liquid Lifter to the Main Body in the same way that the Dust Cup is connected to the Main Unit (see 1).
- Connect the Suction Tool or Window Cleaner to the inlet pipe of the Liquid Lifter (see 1) **IMPORTANT:** Ensure the Liquid Lifter is empty before each use.



## D. HOW TO USE THE X5 VAC PRO (continued)

Accessory	Intended Use
Extension Pipe(s)	Connect one or both Pipes to access hard to reach, or high areas. Use in conjunction with any of the other cleaning accessories.
Triangular Swivel Vacuum Head	Use on carpets, rugs, stairs as well as hard surfaces such as floors. When cleaning carpets, switch the Floor Blade to the <b>UP</b> position. When cleaning hard surfaces, switch the Floor Blade to the <b>DOWN</b> position. Typically, the Triangular Swivel Vacuum Head is connected to one or both Extension Pipes. It can also be connected directly to the Dust Cup Nozzle for close-up vacuuming.

## D. HOW TO USE THE X5 VAC PRO (continued)

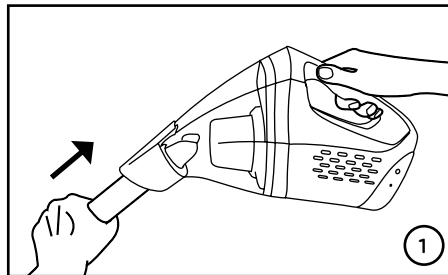


### PREPARING FOR USE

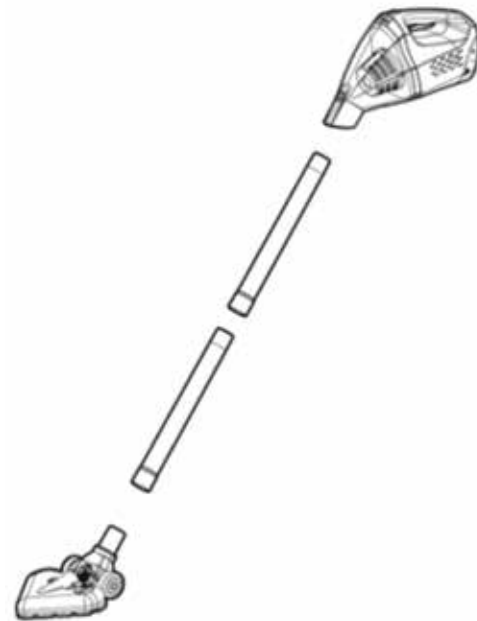
- Before using the X5 VAC PRO for the first time, **ensure the Battery Pack has been charged for 7 hours without interruption.**
- Check that the Mesh and Fabric Filters are fitted into the Dust Cup and that the Dust Cup is securely clipped onto the Main Unit.

### USING THE X5 VAC PRO

- The X5 VAC PRO can be used for vacuuming with or without the use of accessories.
- To facilitate a variety of cleaning jobs, connect one or more of the accessories illustrated to the Dust Cup Nozzle (located on the Dust Cup): Extension Pipe(s), Triangular Swivel Vacuum Head, – see Table 2 for more details on the use of the optional accessories.
- To connect an accessory, insert one end into the Dust Cup Nozzle, ensuring a firm, snug fit (see 1).



13



## D. HOW TO USE THE X5 VAC PRO (continued)



### MAINTENANCE & CARE

- Depending on the extent of use, the expected use time of the Fabric Filter is about 3 – 6 months.

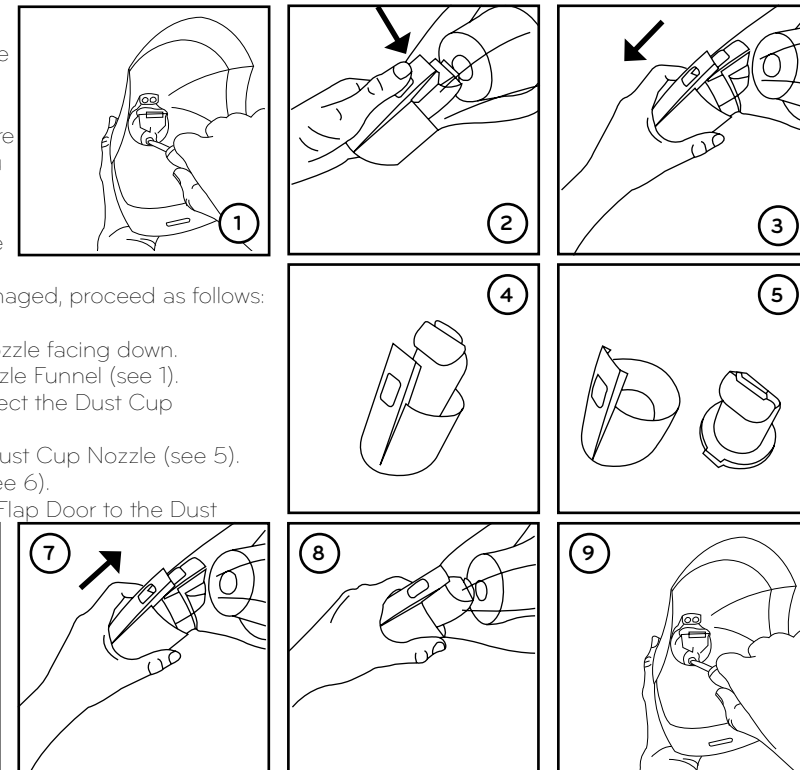
#### IMPORTANT

Replace the Fabric Filter if it becomes heavily soiled or torn (spare Fabric Filters are available from the Customer Service where you purchased your unit from).

- Clean the outer surface of the X5 VAC PRO and the accessories with a soft, damp cloth. Do not use solvents like thinners, benzene or any spray-type cleaners.
- Should the Trap Door become jammed, dislodged or damaged, proceed as follows:
  - Unclip the Dust Cup from the Main Unit.
  - Hold the Dust Cup with one hand with the Dust Cup Nozzle facing down.
  - With the other hand, unscrew the screws below the Nozzle Funnel (see 1).
  - Press the button on the Nozzle Clip and pull to disconnect the Dust Cup Nozzle from the Dust Cup (see 2 - 4).
  - Separate the Nozzle Funnel (with Trap Door) from the Dust Cup Nozzle (see 5).
  - Inspect the Trap Door. If damaged, repair or replace (see 6).
  - After repair or replacement, join the Nozzle Funnel and Flap Door to the Dust Cup Nozzle (see 4).
  - Insert the Dust Cup Nozzle into the Dust Cup and connect to the Nozzle Clip (see 7 - 8).
  - Insert the screws below the Nozzle Funnel and fasten (see 9).

#### IMPORTANT

Check that the Dust Cup Nozzle is securely connected to the Dust Cup.



18

## D. HOW TO USE THE X5 VAC PRO (continued)



### Re-installing the Mesh and Fabric Filters

- Ensure that both the Mesh Filter and Fabric Filter are completely clean and dry before re-installing.
- Push the Fabric Filter back onto the Filter Plate (see 1).
- Place the Mesh Filter over the Fabric Filter and connect to the Filter Plate by twisting the Filter Plate clockwise until it locks (see 2).
- Place the Filter Plate (with Mesh and Fabric Filters connected) into the Dust Cup (see 3).
- Hook the Dust Cup onto the Dust Cup Hook (see 4).
- Connect the Dust Cup to the Dust Cup Clip (see 5).

#### IMPORTANT

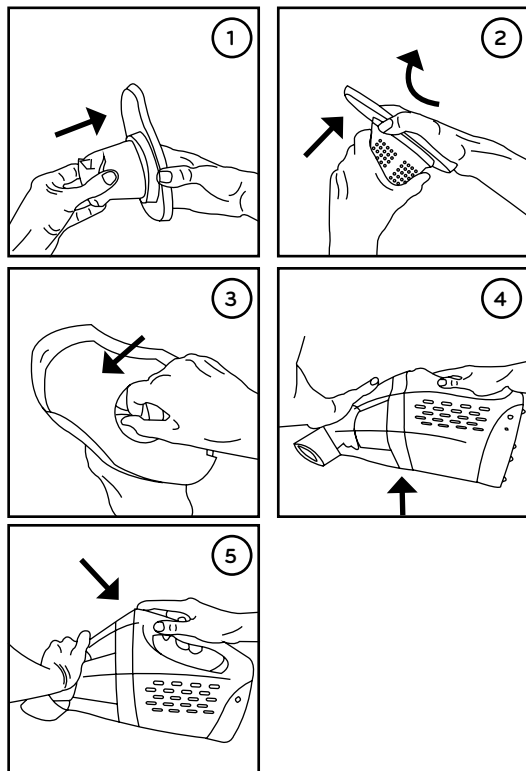
Make sure that the Dust Cup is securely connected to the Main Body.

### CLEANING ACCESSORIES

- After every use, disconnect the Accessories and inspect for any accumulation of dust and dirt. If necessary, clear away any debris.
- Inspect the underside of the Triangular Swivel Vacuum Head, the Wheels and the Axles for any debris that may be entangled and remove.

### STORAGE

- Store the X5 VAC PRO in a dry, cool area, away from children, at room temperature.
- The X5 VAC PRO can be stored upright or horizontally.
- Place and store the Accessories in the Accessory Bag (optional).

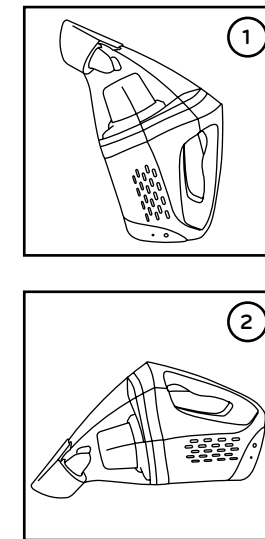


## D. HOW TO USE THE X5 VAC PRO (continued)



- Use or connect the other end as suggested (see Table 1 and 2 in "How to Use Accessories/Optional Accessories" sections).
- To turn the X5 VAC PRO on, slide the Power Switch ON.
- Hold the Handle and proceed with vacuum cleaning by moving the Dust Cup Nozzle (or the suction opening of any of the accessories) in close proximity over the area or object to be vacuumed in an even and slow manner.
- After use, slide the Power Switch OFF.
- In between use, the X5 VAC PRO can be placed upright (see 1) or horizontally (see 2).

**CAUTION** Do not press down on the Dust Cup or Dust Cup Nozzle with excessive force when connecting or using any of the accessories. This may cause damage to the Dust Cup.



## D. HOW TO USE THE X5 VAC PRO (continued)



### DISPOSING OF DIRT AND DEBRIS

- For best performance and to maintain suction power, it is important to empty and clean the Dust Cup, Mesh Filter and Fabric Filter after use.
- The Dust Cup is transparent, allowing you to see how much dust and dirt has accumulated inside the Dust Cup. Once the dust and dirt have reached a level close to the Mesh Filter, this is an indication to stop and empty the Dust Cup.

**WARNING** Do not accumulate so much dust and debris inside the Dust Cup that the Mesh Filter becomes covered or immersed. The Mesh Filter must at all times be above the accumulated dirt and debris.

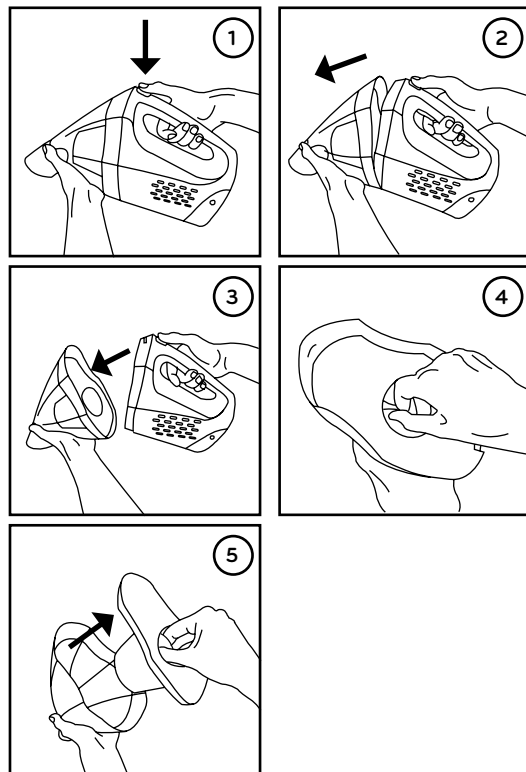
**Tip:** Regular cleaning of the Dust Cup, Mesh and Fabric Filters will ensure efficient performance and increased lifespan of your X5 VAC PRO.

### EMPTYING THE DUST CUP

- Slide the Power Switch OFF.
- Disconnect any accessories from the Dust Cup Nozzle.
- Press the Release Button to disconnect the top of the Dust Cup from the Main Body (see 1 & 2).
- Unclip the Dust Cup from the Dust Cup Hook (see 3).
- Pull the Filter Plate (with the Mesh and the Fabric Filters) out from the Dust Cup (see 4 & 5).
- Empty dust and debris from the Dust Cup into a waste container.

### IMPORTANT

Take care when disconnecting the Dust Cup from the Main Body to ensure that the Filter Plate does not fall out.



## D. HOW TO USE THE X5 VAC PRO (continued)



### CLEANING THE FILTERS

On a regular basis, clean the Mesh and Fabric Filters to dispose of dust and debris and to maintain the suction power of the X5 VAC PRO.

#### Cleaning the Mesh Filter

- Disconnect the Mesh Filter from the Filter Plate by twisting the Filter Plate counter-clockwise while pulling it away from the Mesh Filter (see 1 & 2).
- Shake out and dispose of dust and debris lodged in the Filter.
- To remove stubborn dirt, use a small brush.
- Rinsing the Filter under luke warm water may be necessary.

#### Cleaning the Fabric Filter

- Grip and gently pull the Fabric Filter out from the Filter Plate (see 3 & 4).
- Shake out and dispose of dust and debris lodged in the Filter.
- Use a small brush to remove dust and debris from the Fabric Filter.
- Should the Fabric Filter become soiled, it can be rinsed or gently hand washed in luke warm water. Air dry and do not use hot air blowers such as a hair dryer for drying.

### IMPORTANT

Do not wash the filters in a washing machine.

